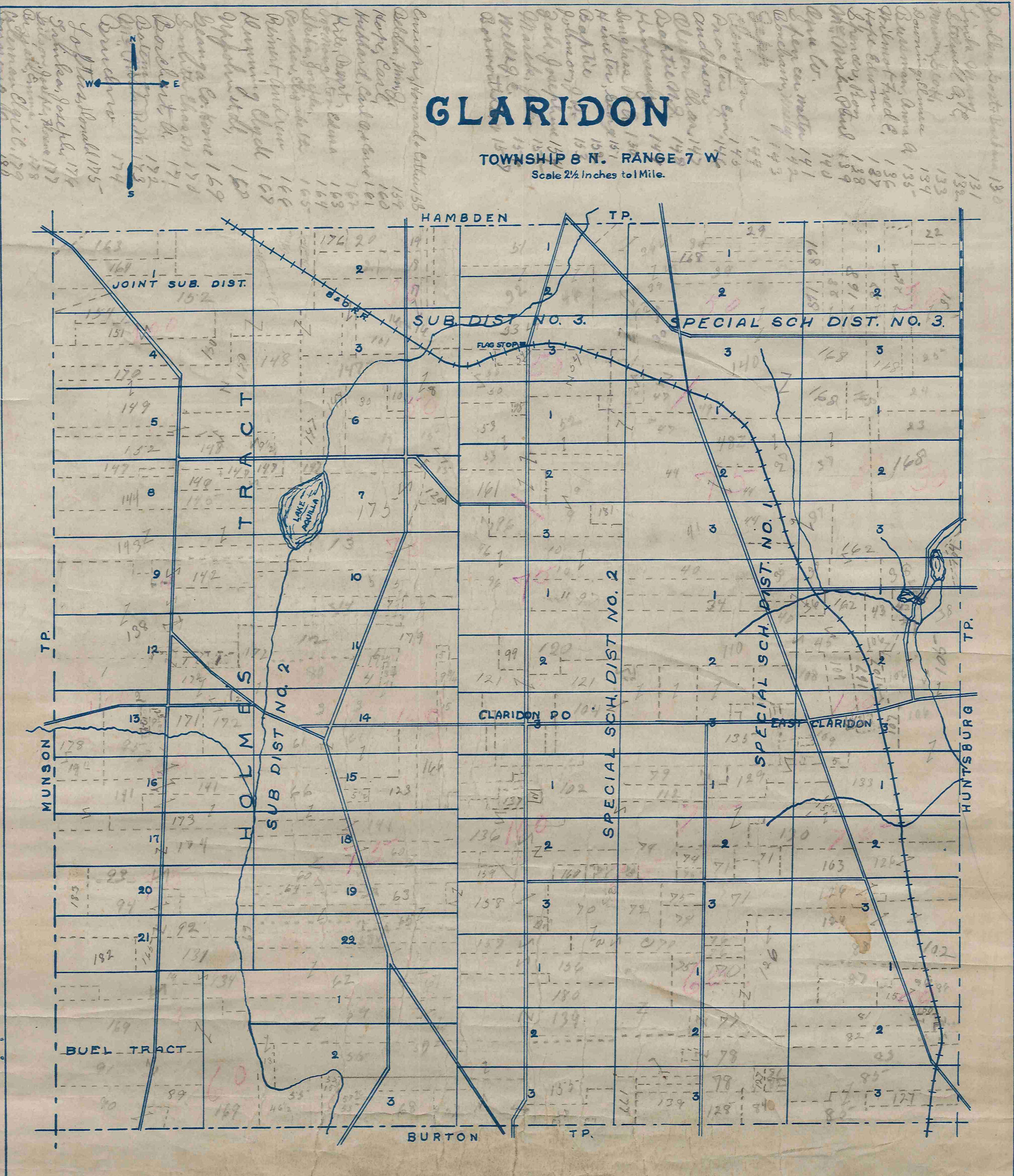


*[Handwritten notes and lists of names and numbers, including names like 'Hamm', 'Hollings', 'H. C. 182', 'Scherville No. 183', and various numerical entries.]*

# GLARIDON

TOWNSHIP 8 N. RANGE 7 W

Scale 2 1/2 Inches to 1 Mile.



*[Vertical handwritten notes on the left margin, including names like 'Roach, H. C. 182' and 'Scherville No. 183'.]*

*[Vertical handwritten notes on the right margin, including names like 'Hamm', 'Hollings', and various numbers.]*